

# SPOT INFORMATION from STATISTICS

NO.166-March 4th 2010 -

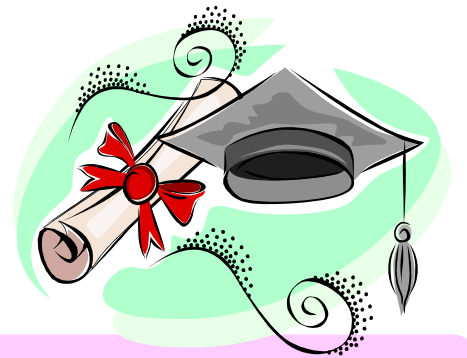
Fukui Prefecture: General Policy Department  
Policy Statistic Division

## - Education Continuance and Getting Employment Situation of Fukui's Junior and Senior High School Graduates -

March is the graduation month in Japan.

This time let's observe the education continuance and getting employment situation of Fukui's junior and senior high school graduates.

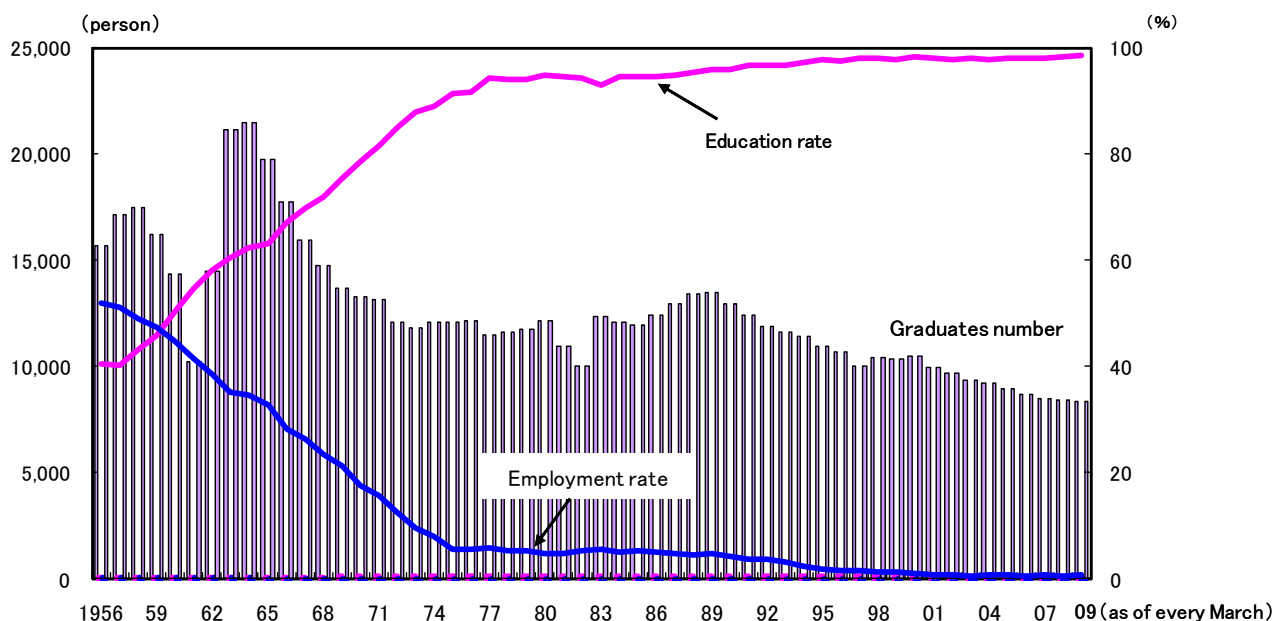
(All cited from "basic survey on schools" and "field survey on junior and senior high school graduates")



### Junior High School Situation

In 1956, more graduates were going to take a job (52.0%) than those who were going on to get higher education (40.5%). However, the proportion was reversed in 1960, and since then education continuance rate had been sharply rising by 1975, with employment rate taking an opposite course. After that, the change has been moderate, resulting in 98.7 % the education continuance rate and 0.6% for employment rate in 2009.

Transition of junior high school graduates' destination

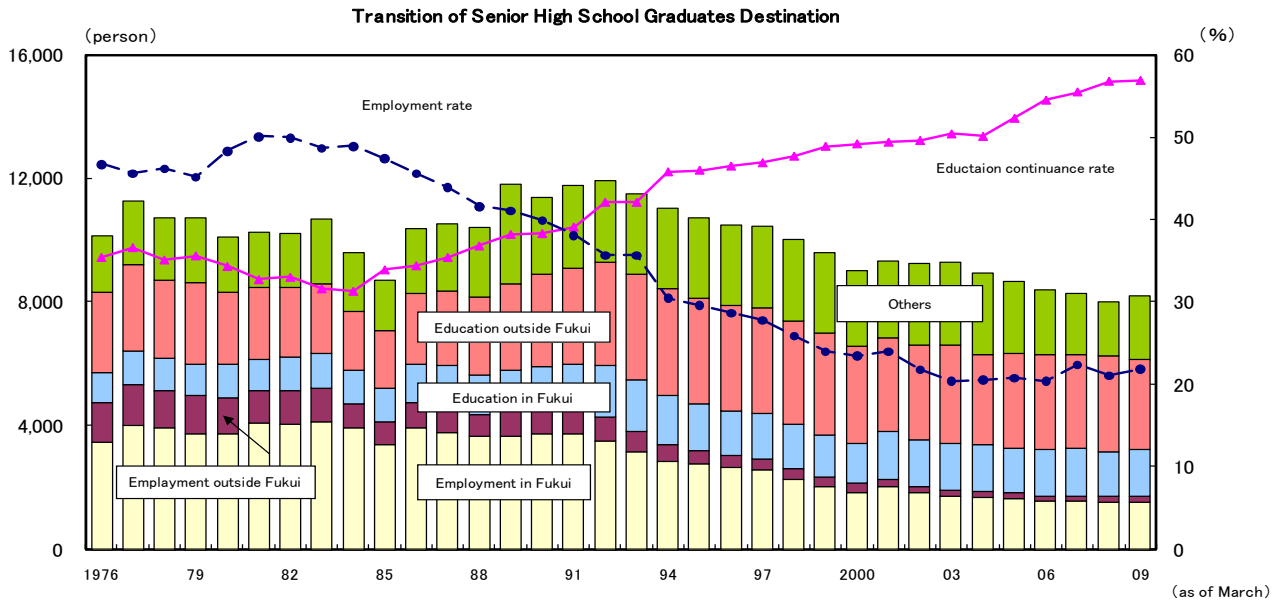


## Senior High School Situation

In 1991, the education continuance rate (\*1) for senior high school graduates (those who graduated in the previous year or before are excluded) exceeded the employment rate and in 2009, the education continuance rate was 56.9%, the record high (53.9% for national average) which ranked 11th nationwide.

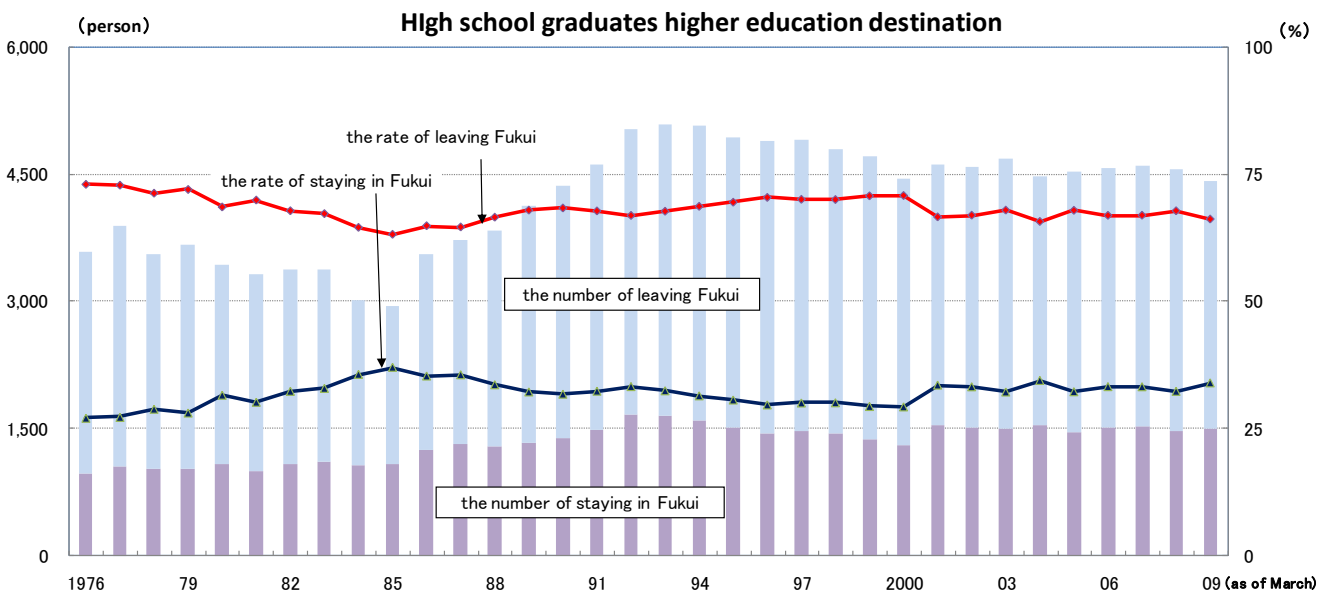
Although it has been decreasing year by year, the employment rate remains mostly level these several years, showing 21.9% (18.2% for national average) in 2009.

Then let us take a closer look at which place graduates have reached so far.



## Transition of the destination for higher education

When we look at the numbers and percentages of high school graduates who leave Fukui and those who stay in Fukui, there has been no drastic change since 1976, when the survey was started. In 2009, 66.1% of the graduates leave Fukui for higher education.

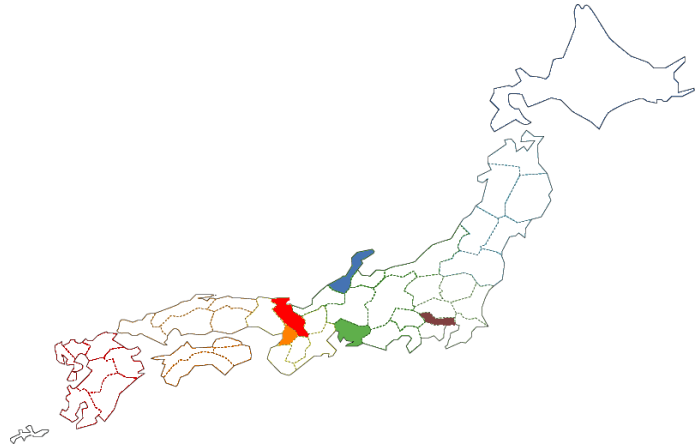


Now let us show you which prefecture they reached in 2009 as indicated on the table below.

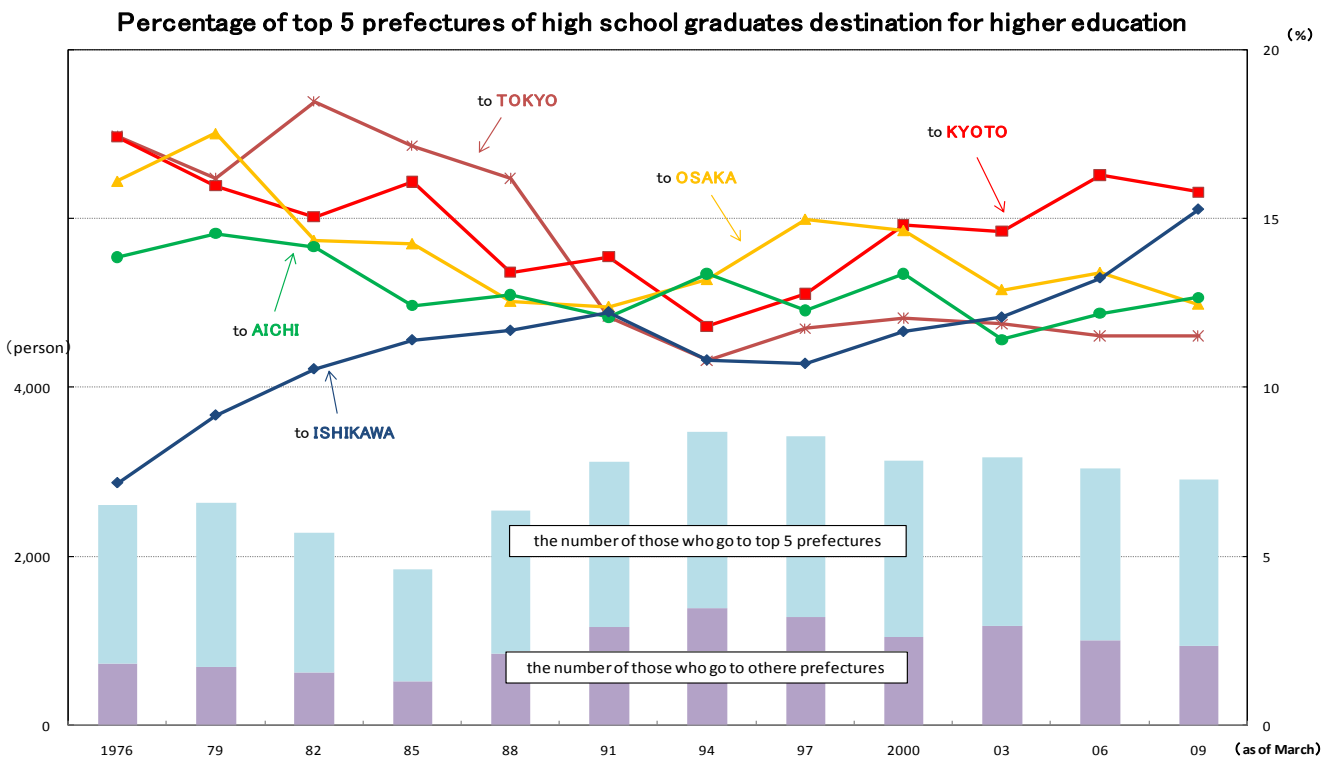
**Prefecture destination**  
(66.1% of all graduates going to higher education)

rank	prefecture	number
1	Kyoto	461
2	Ishikawa	446
3	Aichi	370
4	Osaka	364
5	Tokyo	337

(2009 March)

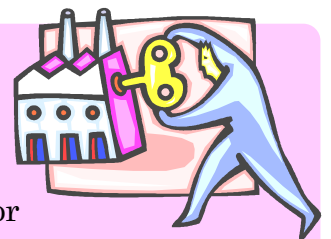


Among the top 5 prefectures (Kyoto, Ishikawa, Aichi, Osaka, Tokyo) in the transition of prefectures as the destination for high school graduates, from 1976 to 1985 Tokyo and Osaka were popular, but in recent years Ishikawa ranks higher than before. Kyoto has been comparatively high since 1976, ranking top in the 2009 survey.

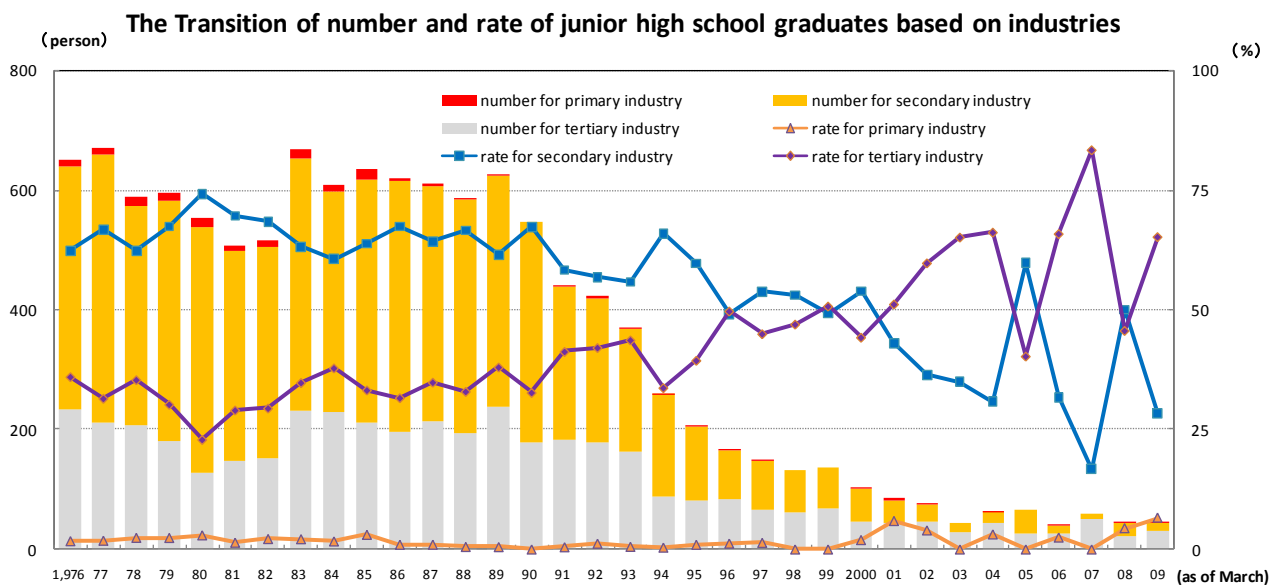


## Transition of the industries graduates go into

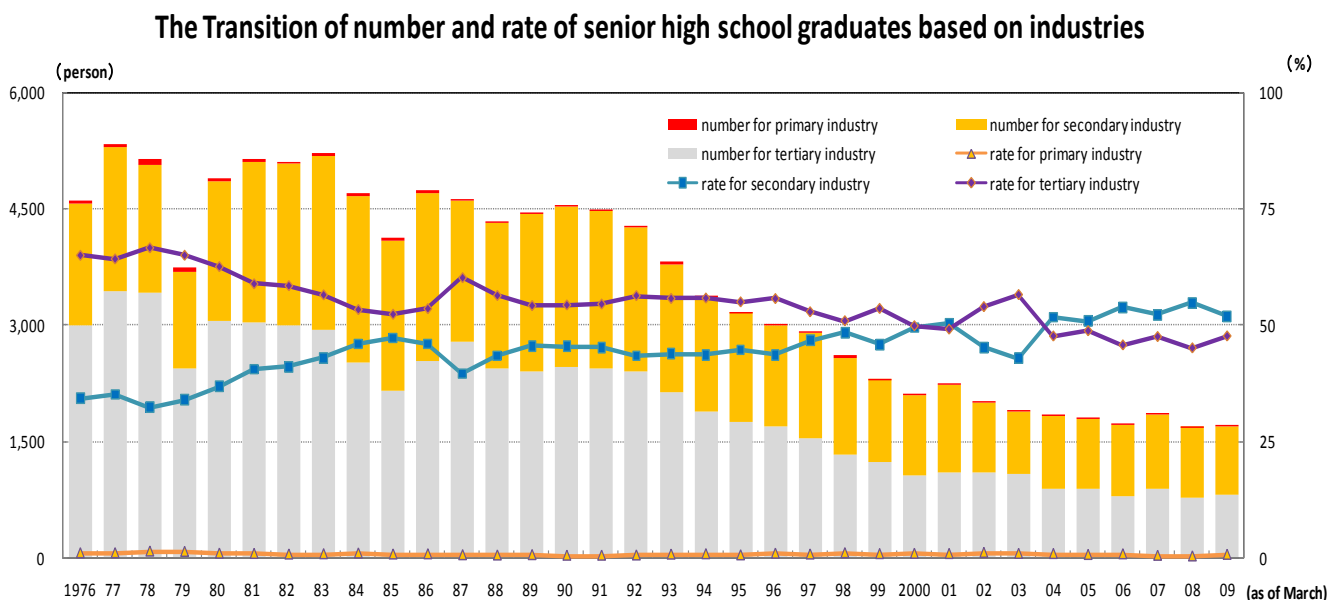
In 1976, much more junior high school graduates were engaged in secondary industries (62.3%) compared to tertiary industries (36.0%). The trend was reversed in 1999, followed by the general increase of the latter. In 2009, the rate for secondary industries is 28.3%, and 65.0% for



tertiary ones.



In 1976, the proportion of secondary industries and tertiary ones for senior high school graduates was opposite to that for junior high, indicating 34.1% for the former and 65.0% for the latter (\*2). However, since 1998, the rates for both industries have been almost the same. In 2009, the rate for secondary industries is 51.8%, and 47.6% for tertiary ones.



(\*1) Higher education here means universities, colleges (correspondence courses and special courses included), and senior high school courses in special studies.

(\*2) The data about the industries senior high school graduates take is classified based upon Japan Industry Classification.

If you want to know more about the materials on this page, please contact the Population and Human Life Statistics Group (TEL: 0776-20-0271) in the Policy Statistics Division.