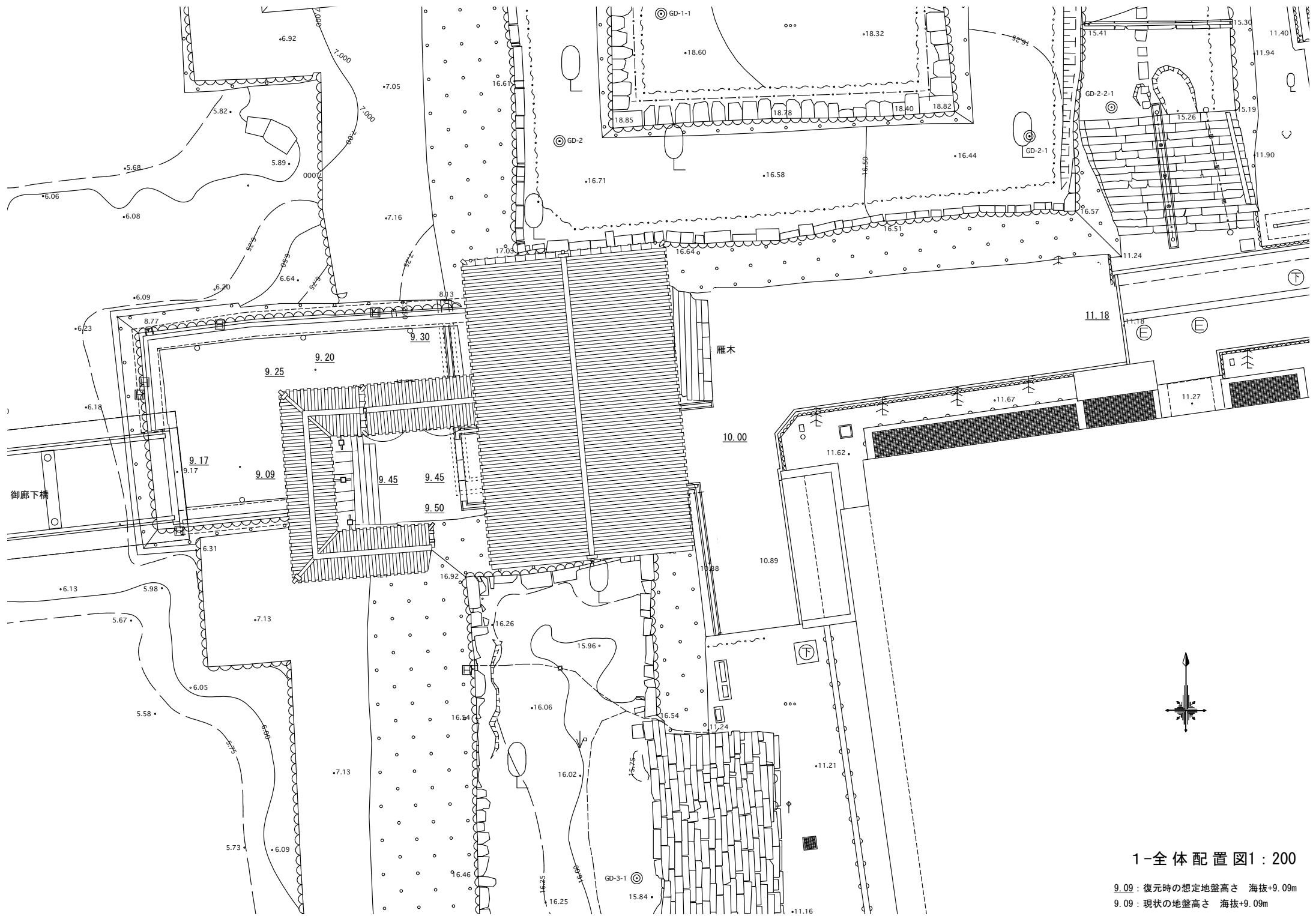
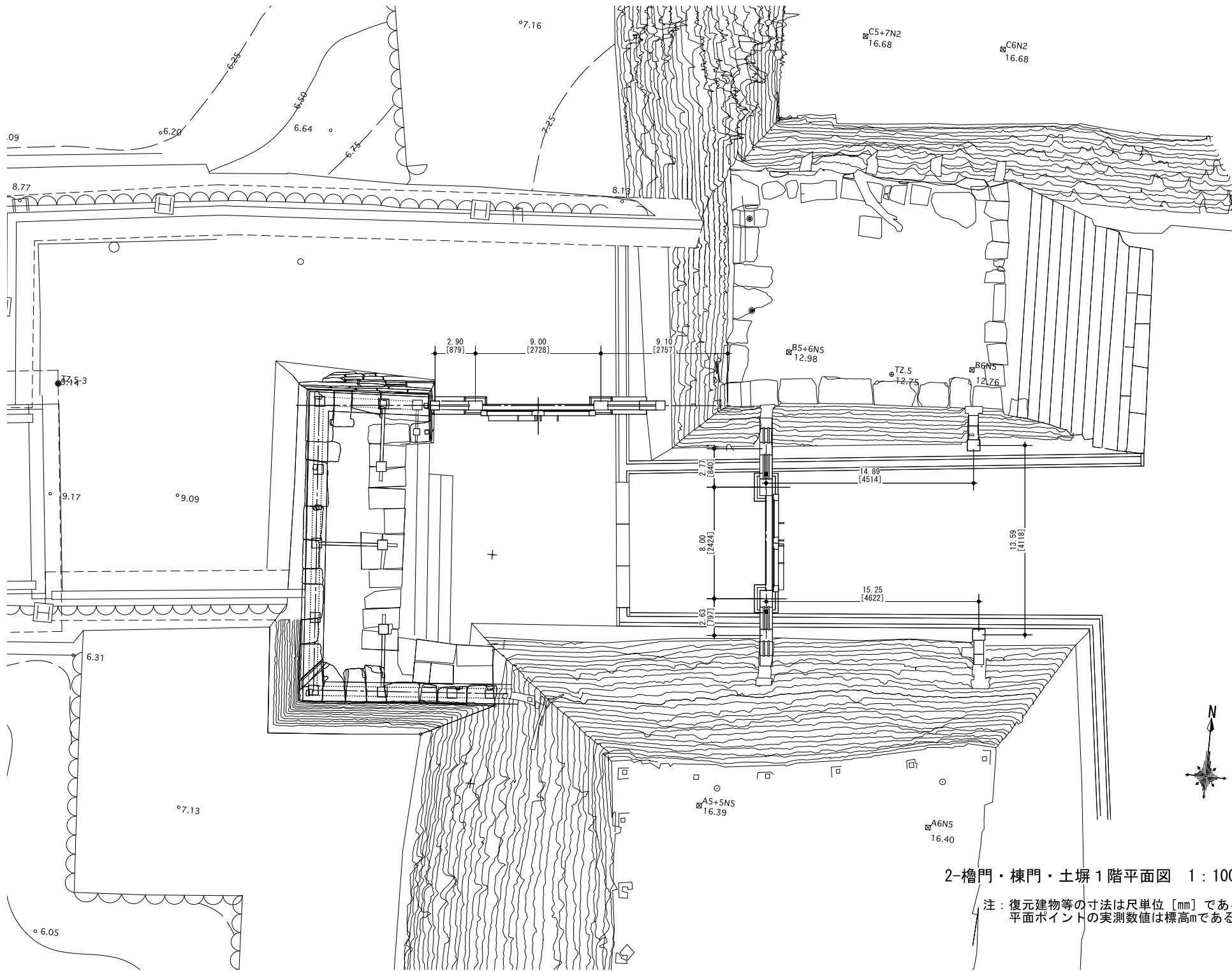


実施図面



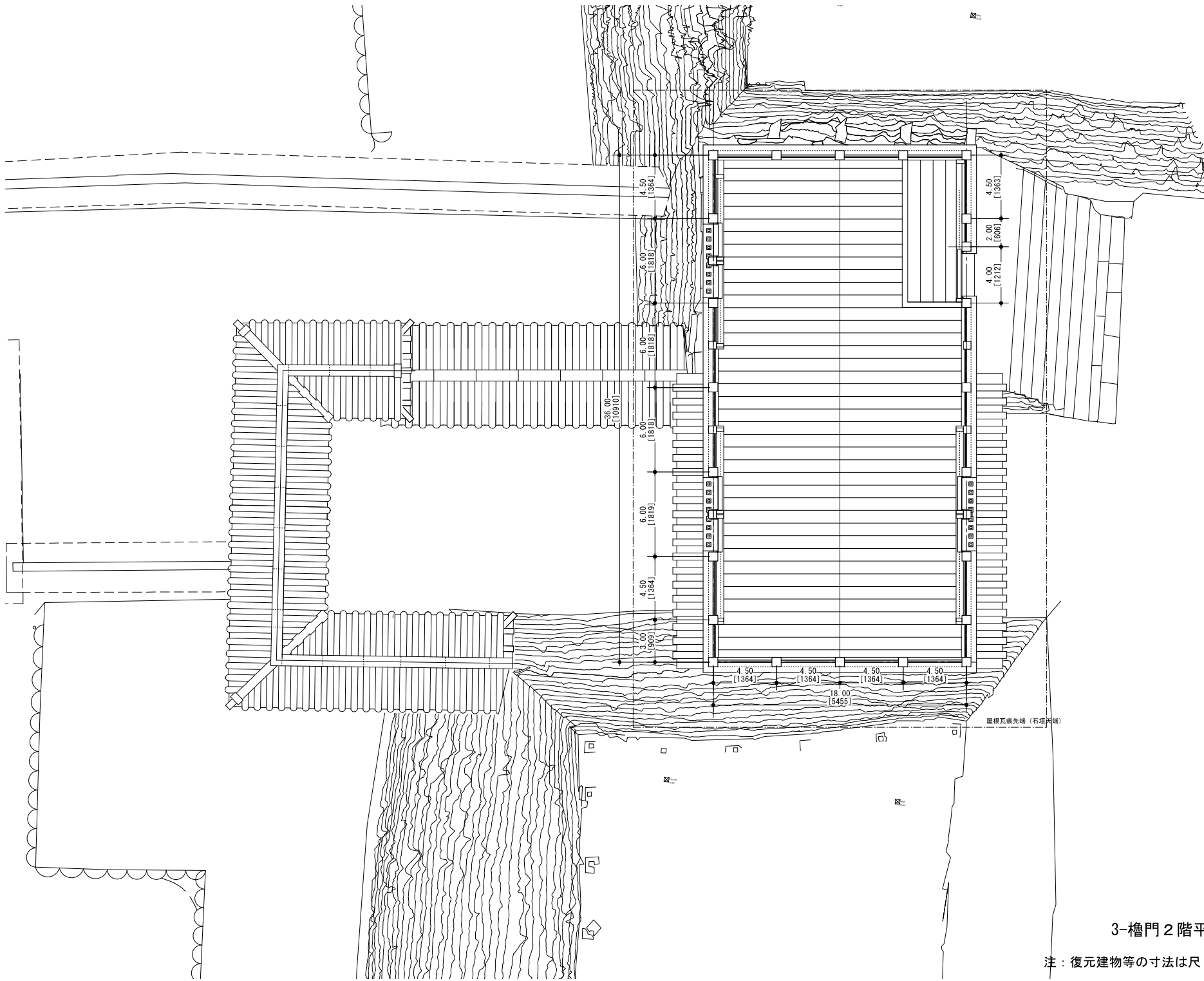
1-全体配置図1:200

9.09: 復元時の想定地盤高さ 海拔+9.09m
 9.09: 現状の地盤高さ 海拔+9.09m



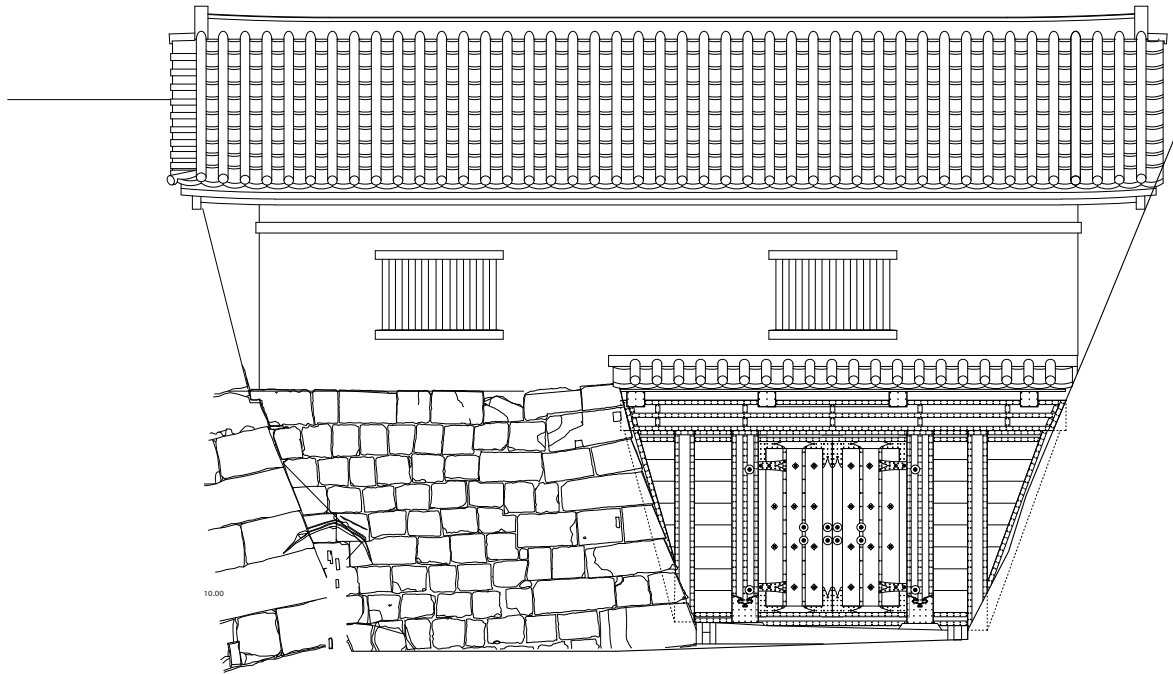
2-櫓門・棟門・土塀1階平面図 1:100

注：復元建物等の寸法は尺単位 [mm] である
 平面ポイントの実測数値は標高mである。

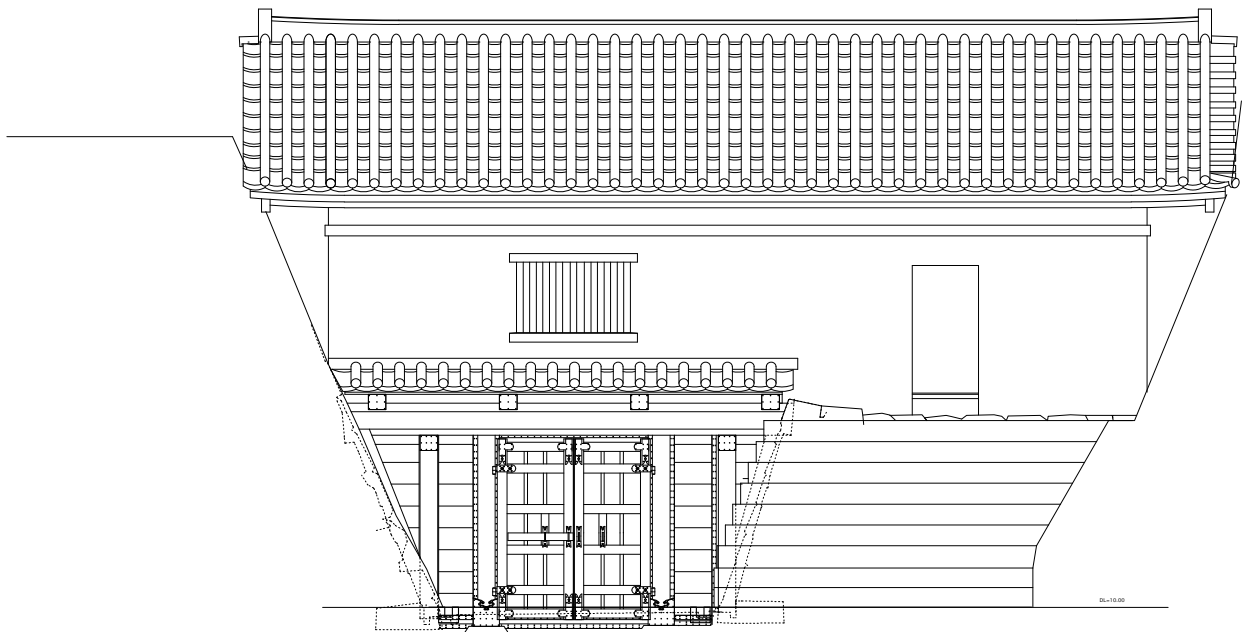


3-櫓門2階平面図 1 : 100

注：復元建物等の寸法は尺 (mm) 単位である

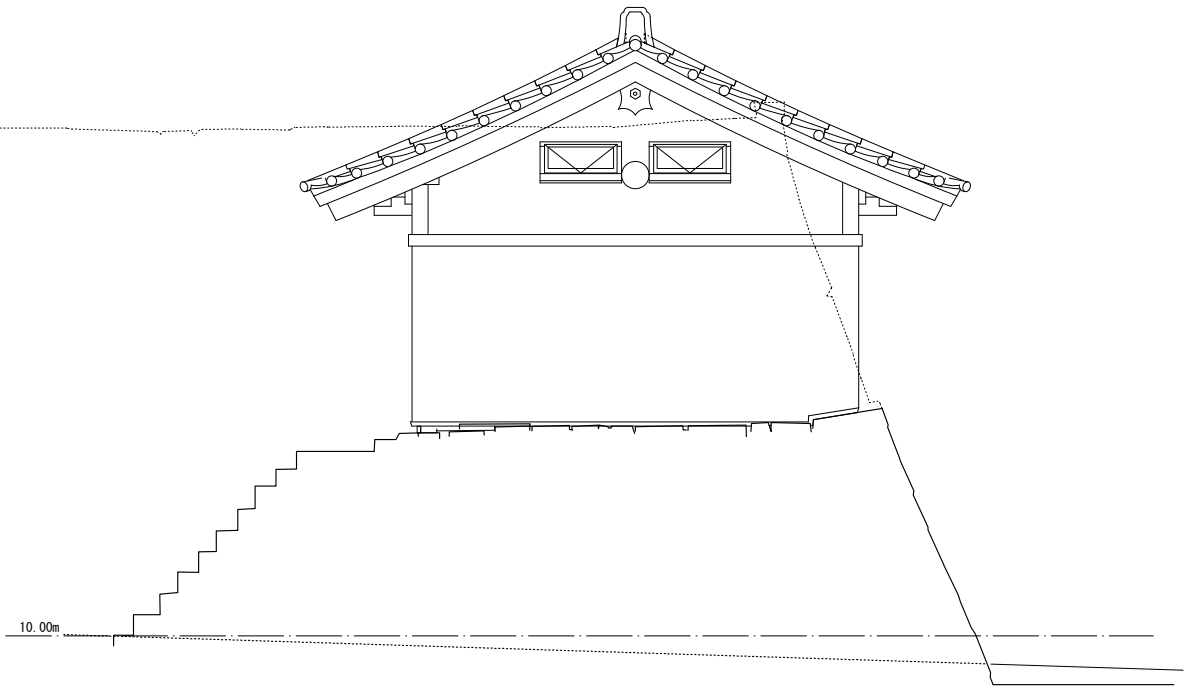


正面图（西側立面图）



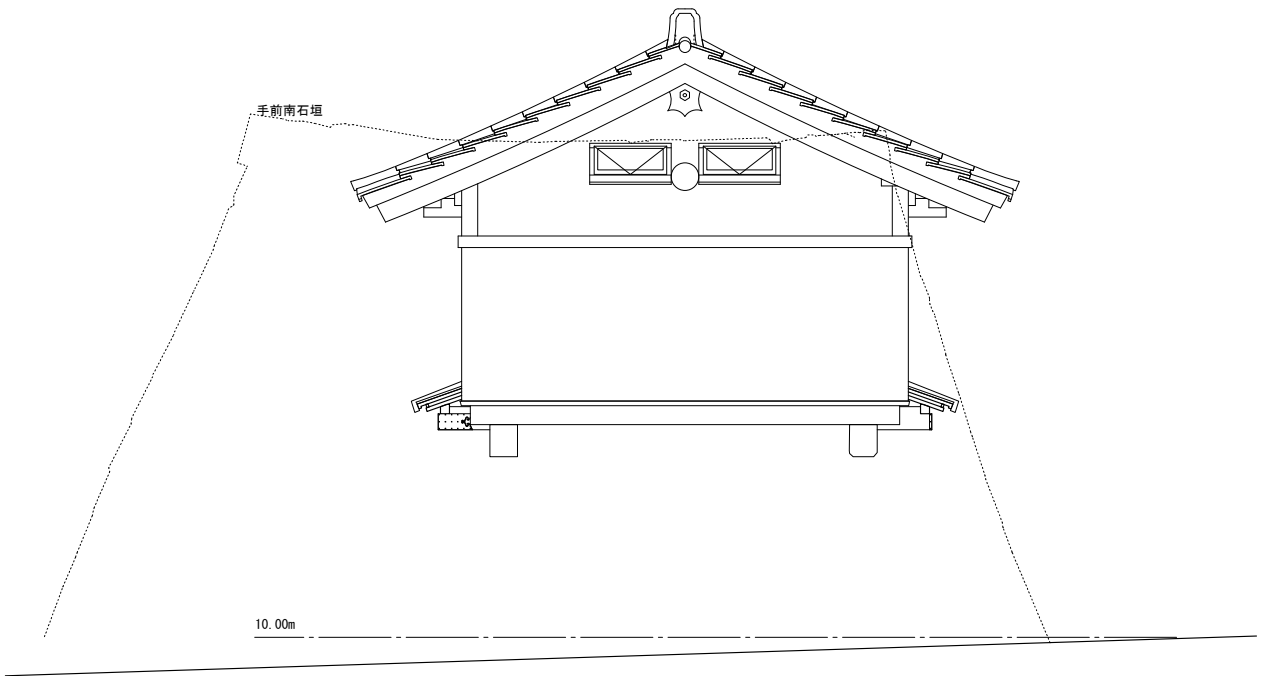
背面图（東側立面图）

手前天守台石垣

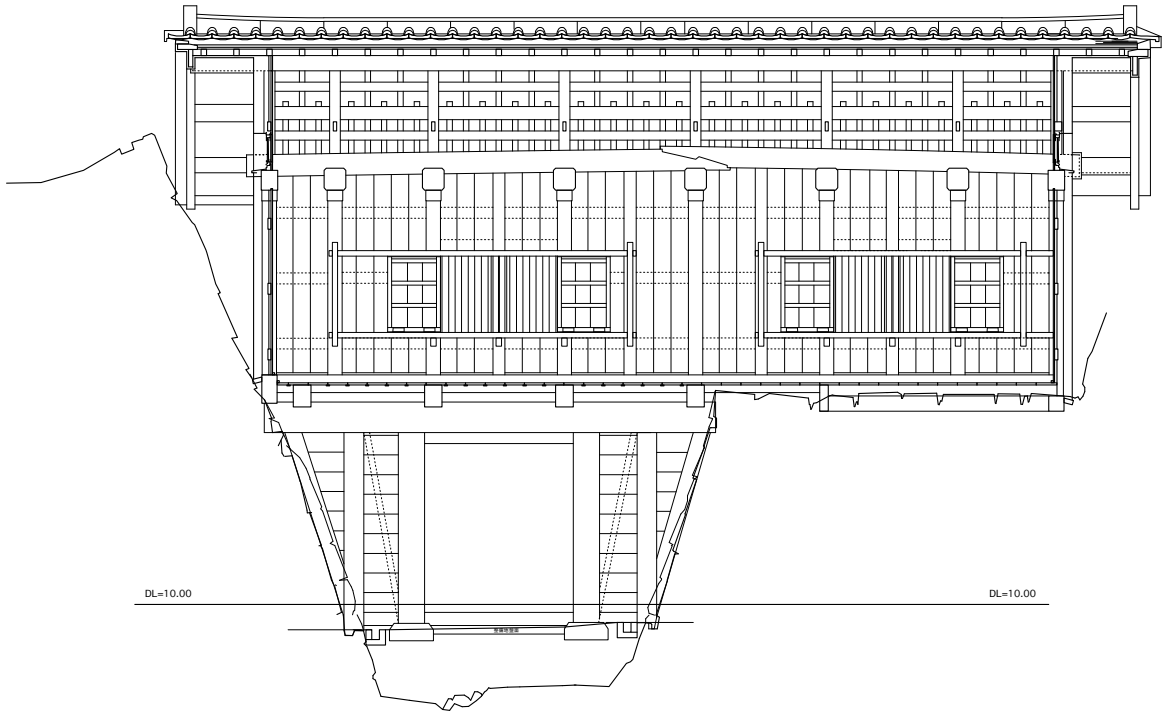


北妻面図

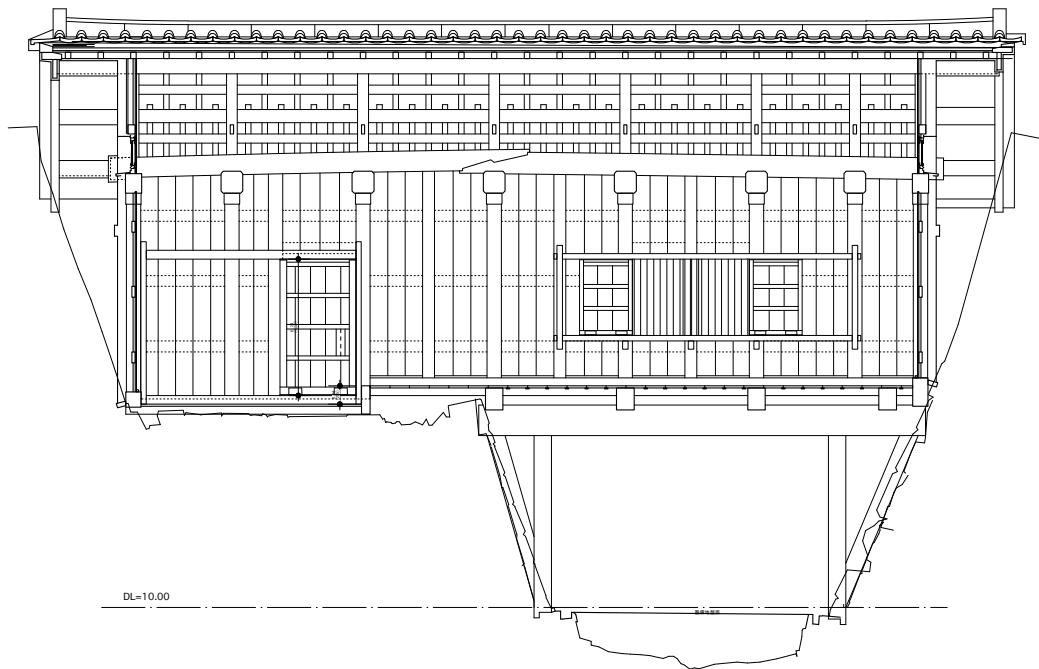
手前南石垣



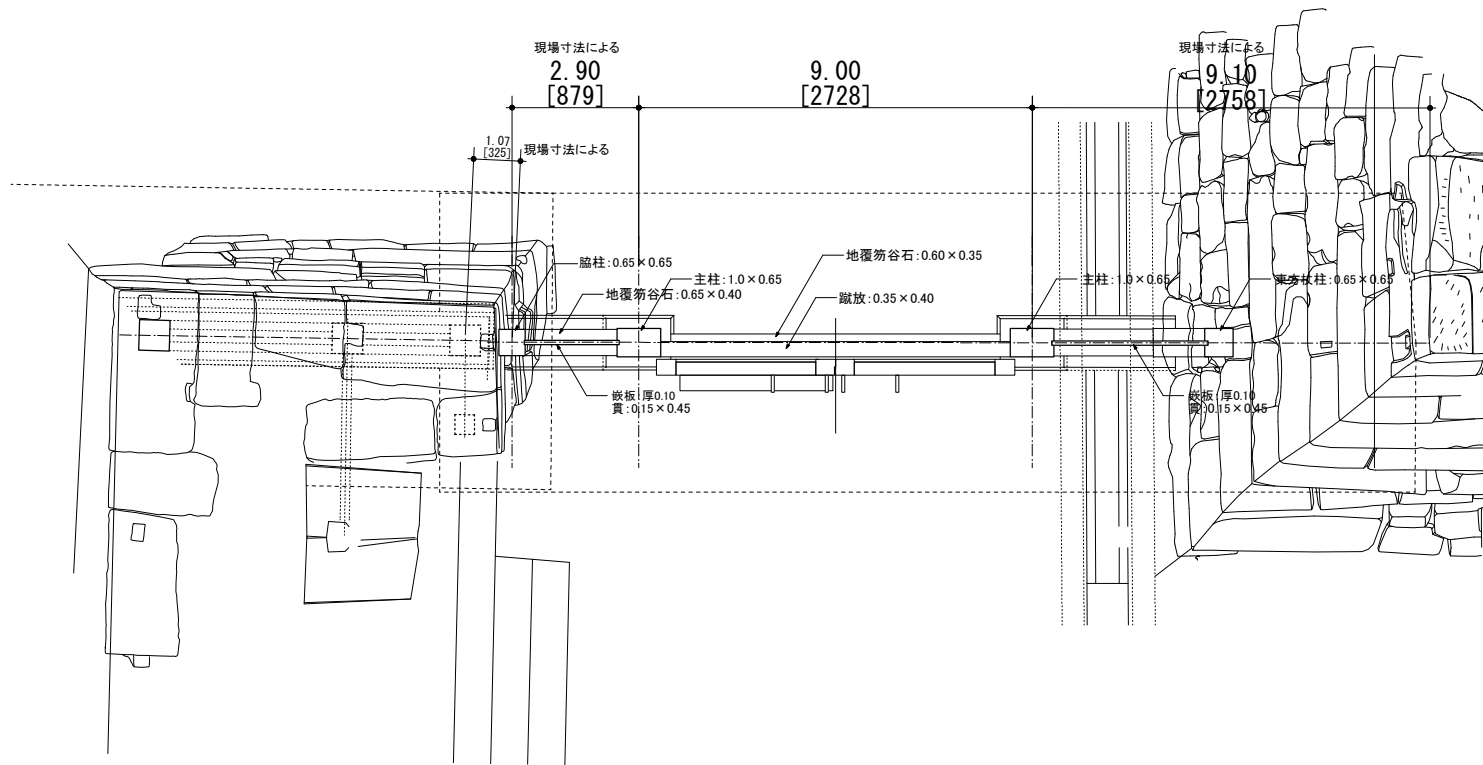
南妻面図



西展開図 (主柱通り)

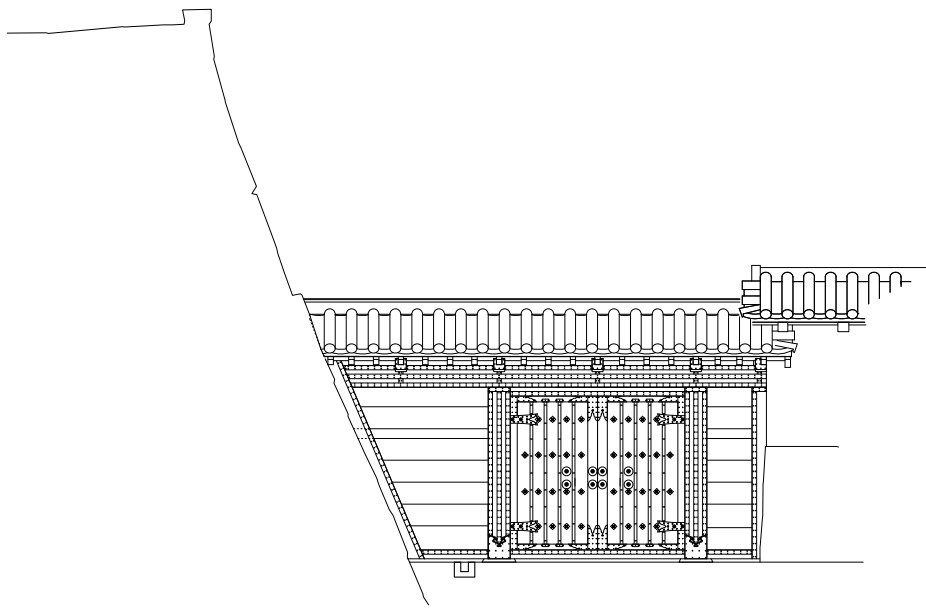


東展開図 (控柱通り)

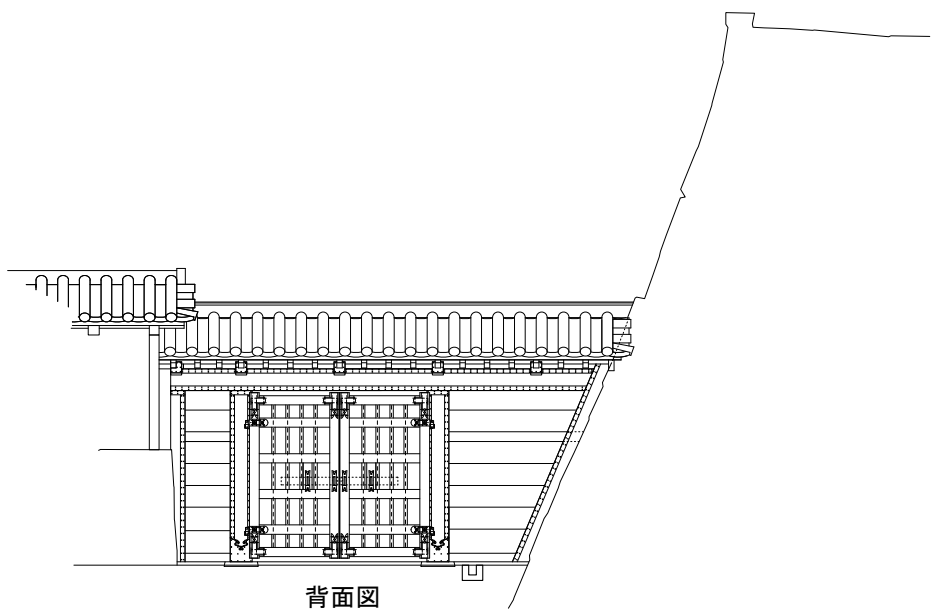


平面図

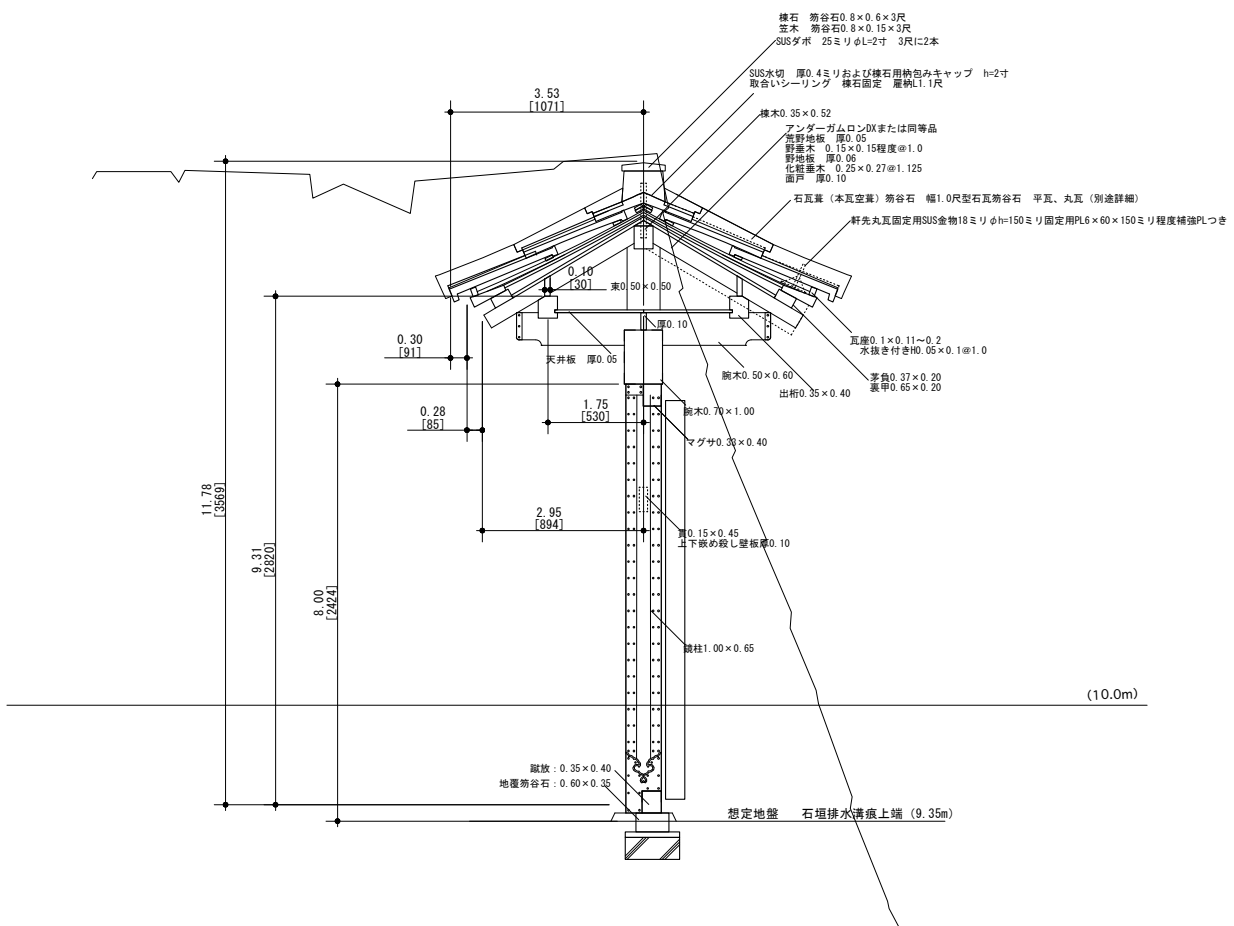
8-棟門平面図 1 : 50

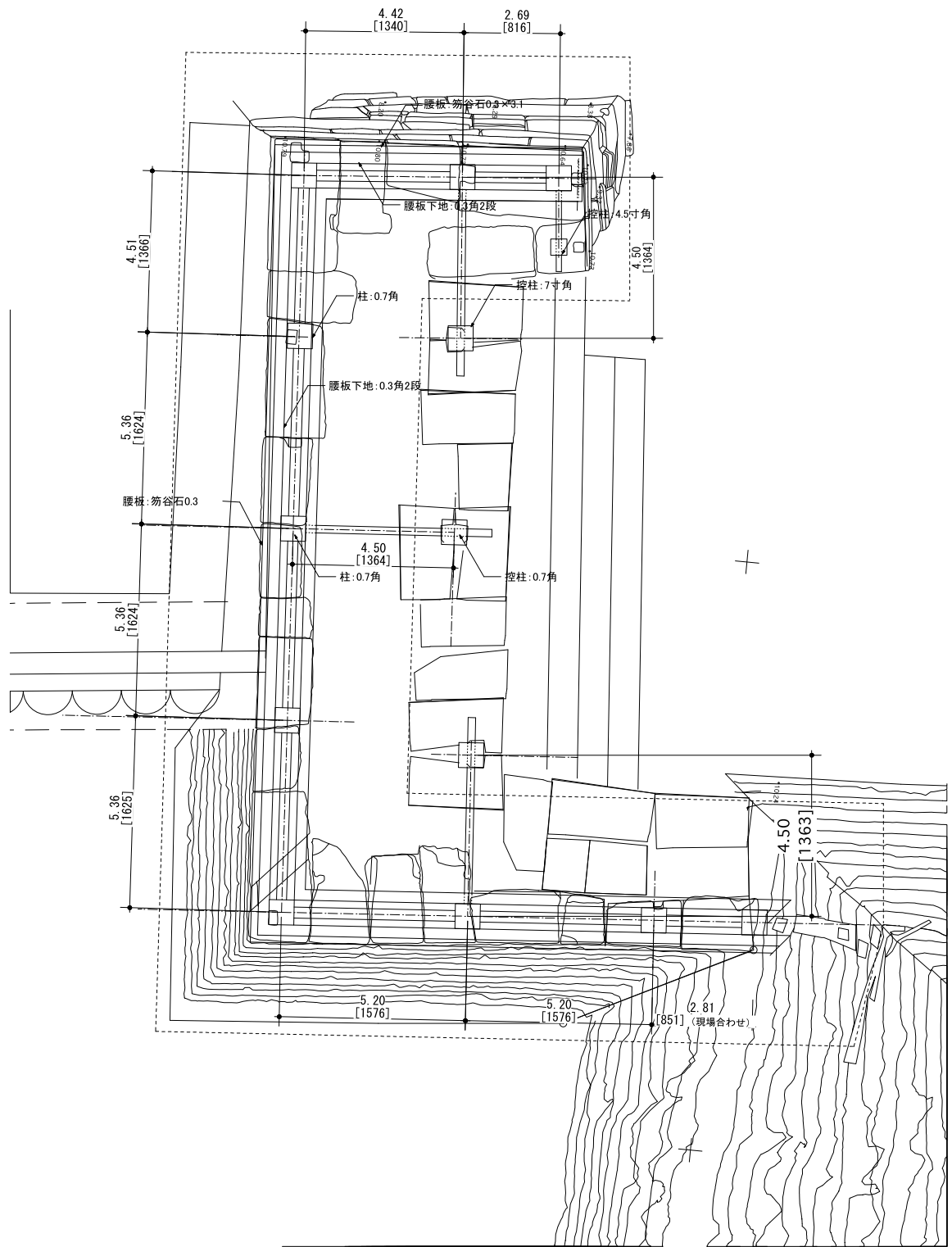


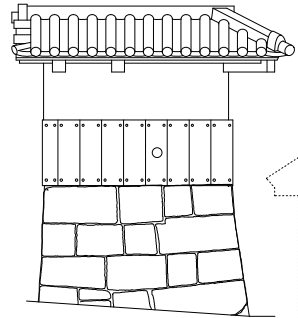
正面图



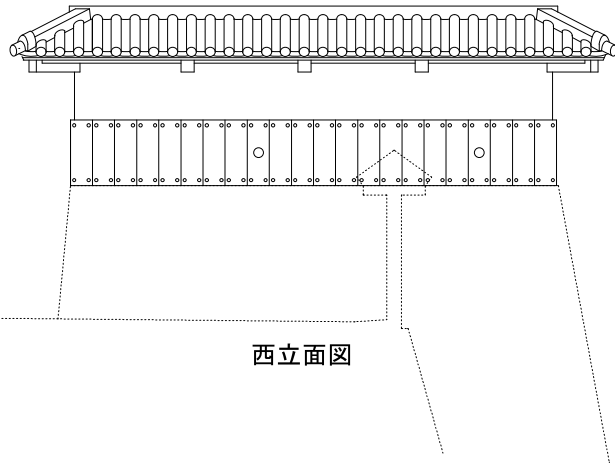
背面图



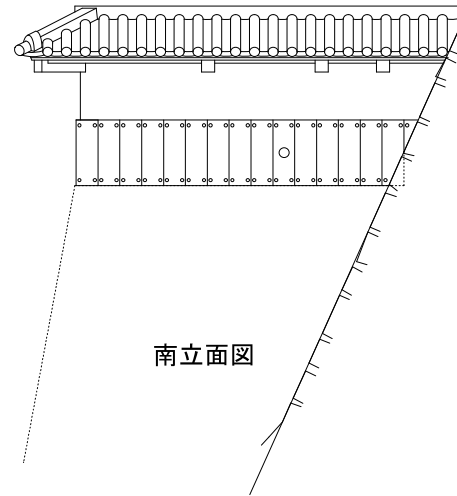




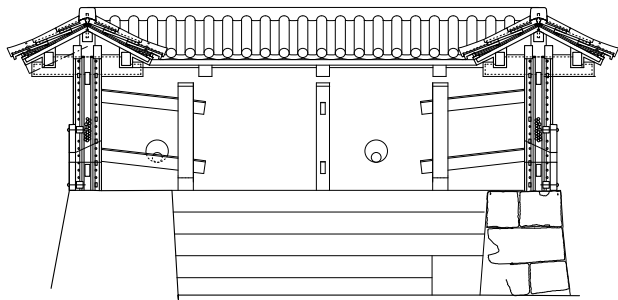
北立面图



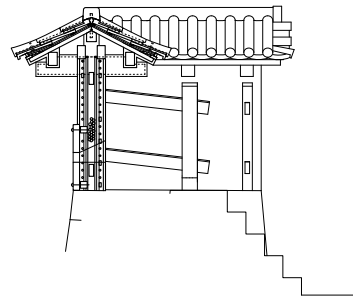
西立面图



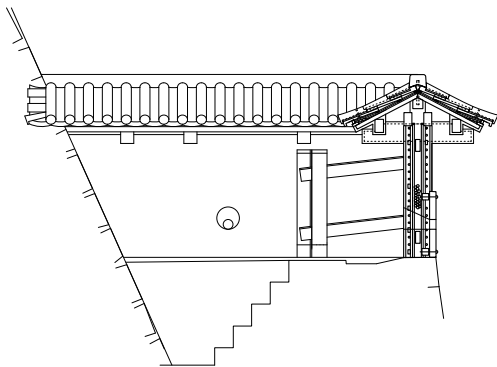
南立面图



東立面图 (桁形内)



南立面图 (桁形内)



北立面图 (桁形内)

