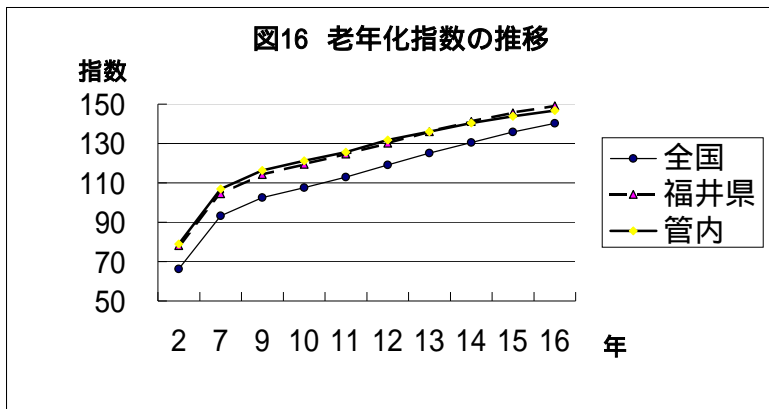


表2 管内年齢3区分別人口割合(%)および老年化指数

年齢 年	0～14才																15～64才																65才以上																老年化指数															
	平成 2	7	9	10	11	12	13	14	15	16	平成 2	7	9	10	11	12	13	14	15	16	平成 2	7	9	10	11	12	13	14	15	16	平成 2	7	9	10	11	12	13	14	15	16																								
市町村	2	7	9	10	11	12	13	14	15	16	2	7	9	10	11	12	13	14	15	16	2	7	9	10	11	12	13	14	15	16	2	7	9	10	11	12	13	14	15	16																								
全国	18.2	15.9	15.4	15.1	14.8	14.6	14.4	14.2	14.0	13.9	69.7	69.2	68.9	68.7	68.5	68.0	67.7	67.3	66.9	66.6	12.1	14.8	15.8	16.2	16.7	17.4	18.0	18.5	19.0	19.5	66.2	93.2	102.5	107.6	113.0	119.1	125.1	130.5	135.8	140.3																								
福井県	18.9	17.0	16.5	16.3	16.0	15.7	15.5	15.3	15.0	14.8	66.2	65.2	64.6	64.3	64.1	63.8	63.4	63.2	62.9	63.0	14.8	17.7	18.9	19.4	19.9	20.5	21.1	21.6	21.9	22.1	78.2	104.4	114.3	119.5	124.6	130.2	136.0	141.3	145.6	149.2																								
管内	19.3	17.1	16.6	16.4	16.1	16.0	15.4	15.5	15.4	15.2	65.5	64.6	64.1	63.8	63.7	63.0	63.7	62.7	62.4	62.4	15.3	18.3	19.3	19.8	20.2	21.0	20.9	21.8	22.1	22.3	78.9	106.9	116.4	121.2	125.6	131.8	136.0	140.4	143.8	146.8																								
武生市	19.4	17.2	16.7	16.5	16.3	16.0	15.9	15.7	15.6	15.3	66.2	65.6	65.0	64.7	64.6	64.4	63.7	63.6	63.5	63.6	14.5	17.3	18.3	18.7	19.1	19.6	20.3	20.7	20.9	21.1	74.6	100.7	109.3	113.1	117.4	122.1	127.6	131.8	134.3	137.6																								
鯖江市	19.1	16.9	16.6	16.4	16.3	16.1	16.0	16.0	15.9	15.8	67.3	66.8	66.1	65.8	65.6	65.4	64.9	64.6	64.2	64.0	13.6	16.2	17.3	17.8	18.1	18.5	19.0	19.4	19.8	20.0	71.2	95.9	104.6	108.5	111.8	114.6	118.8	121.9	124.7	126.3																								
今立町	19.3	17.4	16.8	16.3	16.3	16.1	15.9	15.6	15.2	15.0	63.7	62.3	61.4	61.3	61.1	60.4	60.0	59.7	59.4	59.3	16.9	20.4	21.8	22.3	22.6	23.5	24.1	24.7	25.4	25.7	87.6	117.5	129.5	137.1	139.0	145.2	151.9	159.1	167.9	171.6																								
池田町	16.4	15.9	15.2	15.1	14.9	14.4	13.6	13.3	12.3	12.0	60.7	55.1	53.2	52.1	50.8	51.0	50.7	50.1	50.0	50.4	22.9	29.0	31.6	32.8	34.3	34.6	35.7	36.6	37.6	37.6	139.1	181.8	207.3	217.8	231.1	241.6	262.8	275.7	304.9	314.5																								
南条町	20.9	18.8	18.3	18.2	18.0	16.9	16.5	16.4	15.9	15.9	62.0	60.3	59.8	59.4	59.1	59.7	59.3	59.0	59.4	59.2	17.2	20.9	21.9	22.5	22.9	23.4	24.1	24.6	24.7	24.9	82.2	111.5	119.6	123.4	127.6	137.9	145.8	149.7	155.5	156.4																								
今庄町	17.1	15.8	15.4	15.1	14.5	14.2	14.0	13.6	13.6	13.1	63.3	60.5	59.5	58.7	58.4	57.3	56.3	55.9	55.5	55.5	19.7	23.7	25.1	26.2	27.1	28.5	29.6	30.6	30.9	31.4	115.3	150.6	163.3	174.1	186.7	201.2	210.8	225.1	226.7	239.8																								
河野村	18.5	17.3	16.1	15.3	13.6	14.0	13.3	12.8	12.8	12.7	63.8	60.9	59.5	59.2	60.0	58.7	59.2	58.0	57.5	56.5	17.7	21.8	24.3	25.5	26.4	27.3	27.5	29.3	29.8	30.8	95.6	126.5	150.8	166.9	194.9	194.6	206.8	228.6	232.6	241.5																								
朝日町	20.2	17.6	17.5	17.2	17.0	17.1	16.8	16.6	16.5	16.2	62.1	62.5	62.7	62.8	62.8	62.5	62.0	62.0	62.0	62.1	17.5	19.9	19.8	20.0	20.2	20.4	21.2	21.4	21.5	21.8	86.6	113.4	113.3	116.7	119.0	119.7	126.8	129.2	130.8	134.8																								
宮崎村	19.0	17.5	16.9	16.4	15.9	16.1	15.8	15.2	15.4	15.2	65.4	64.6	63.9	63.4	63.3	62.7	62.1	62.0	61.4	61.2	15.6	17.9	19.2	20.2	20.8	21.2	22.1	22.9	23.3	23.6	81.8	102.4	113.8	123.1	131.0	131.9	140.4	150.6	151.5	154.9																								
越前町	19.4	17.2	16.1	15.4	14.7	14.0	13.8	13.1	12.9	12.3	61.9	60.2	59.3	59.2	59.5	59.5	58.9	58.8	58.7	58.5	18.7	22.6	24.6	25.5	25.8	26.5	27.3	28.1	28.4	29.2	96.4	131.7	153.1	165.8	172.2	188.6	198.7	213.6	219.2	237.0																								
越廼村	17.4	13.8	13.0	12.0	11.5	10.7	10.4	10.1	10.1	10.0	62.9	62.5	60.6	60.6	60.4	60.3	60.5	59.9	59.7	59.5	19.8	23.7	26.4	27.4	28.1	29.0	29.1	30.0	30.2	30.5	113.7	171.8	204.0	228.2	244.0	272.4	279.6	298.4	299.5	305.6																								
織田町	20.4	18.0	17.2	16.8	17.6	15.5	15.0	14.5	14.0	13.5	62.2	60.6	60.5	60.4	58.8	58.9	59.0	59.4	59.5	60.0	17.4	21.3	22.3	22.8	23.6	25.6	26.0	26.1	26.5	26.5	85.1	118.2	130.0	135.6	134.1	165.9	173.5	180.7	188.9	195.9																								
清水町	21.1	16.9	15.8	15.8	15.7	15.5	15.4	15.5	15.5	15.3	64.5	64.7	65.3	65.1	64.6	63.8	63.7	63.5	63.0	63.1	14.4	18.3	18.8	19.1	19.7	20.7	20.9	21.1	21.5	21.6	68.2	108.0	118.8	121.0	125.4	133.1	135.4	136.1	138.9	141.4																								

全国については平成2、7、12年は国勢調査、平成9～11、13～16年は国民衛生の動向、福井県、管内については平成2、7、12年は国勢調査、平成9～11、13～16年は「福井県の推計人口」(情報政策課)による



$$\text{老年化指数} = \frac{\text{65才以上の人口}}{\text{0～14才の人口}} \times 100$$