

# 住宅

Housing

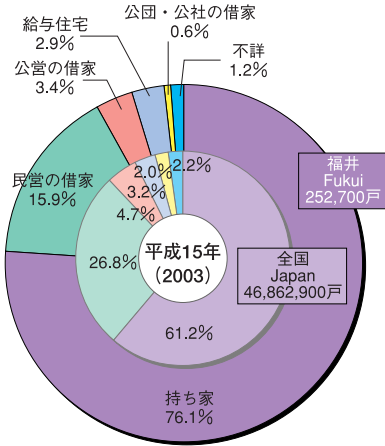
# 物価

Prices

## 住宅の所有の関係別割合

Principal household by tenure of dwelling

- 持ち家  
Owned houses
- 公営の借家  
Rented houses owned by local government
- 公団・公社の借家  
Rented houses owned by public corporation
- 民営の借家  
Rented houses owned privately
- 給与住宅  
Rented houses Issued houses
- 不詳  
Unknown

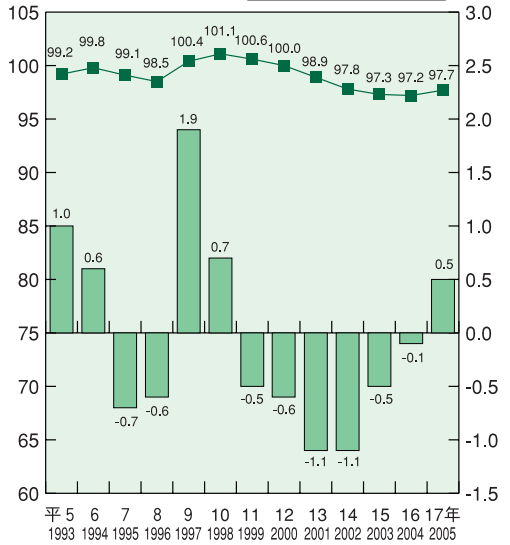


【住宅・土地統計調査】

## 消費者物価指数

Consumer price index

- 対前年上昇率  
Percentage change
- 総合指数  
General index



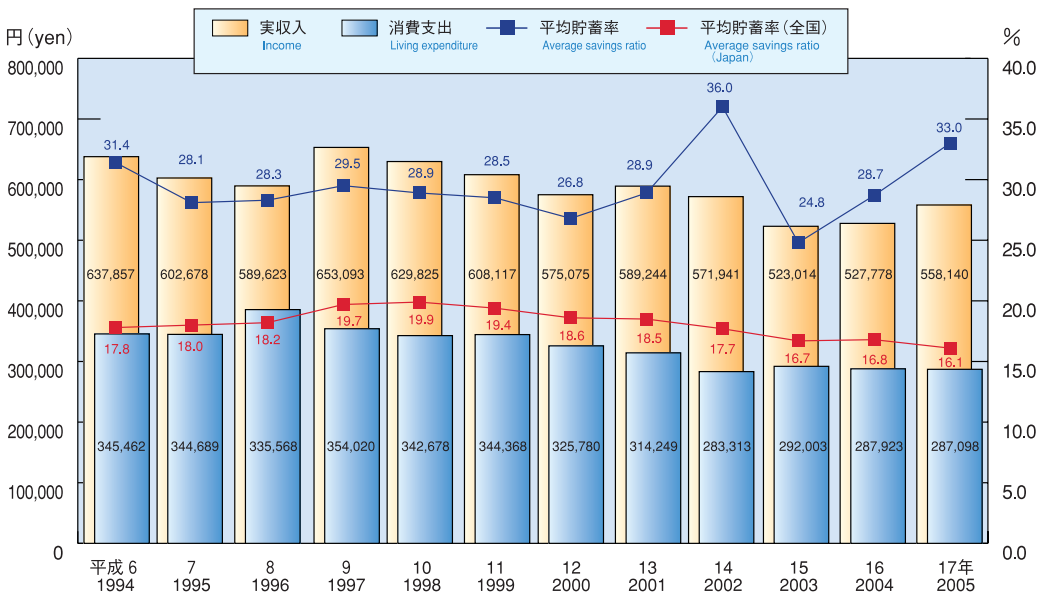
政策統計室「福井県消費者物価指数」

# 家計

Family income and expenditure

## 実収入と消費支出の推移 (福井市、勤労者世帯、1世帯あたり1か月平均)

Income and Average savings ratio (Fukuji city, Worker's household, Average for one month a family)



(平均貯蓄率：可処分所得に占める貯金純増の割合)「家計調査」